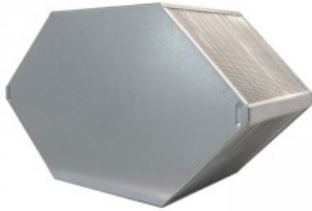


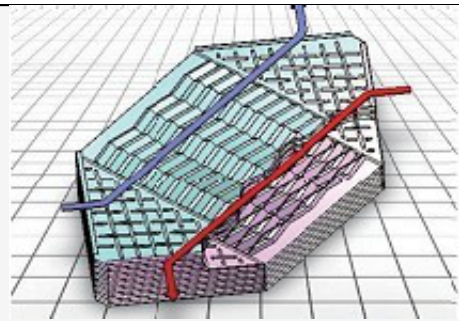
# Cross Counterflow Heat Exchangers

**HOLTOP**



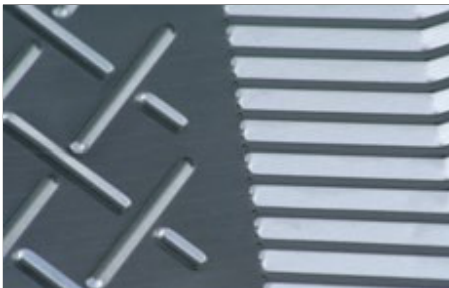
## Working principle of Cross Counterflow Sensible Air to Air Plate Heat Exchangers

Two neighbor aluminum foils form a channel for fresh or exhaust air stream. Heat is transferred when the partial air streams flow crossly and partial air streams flow counter through the channels, and fresh air and exhaust air is totally separated.

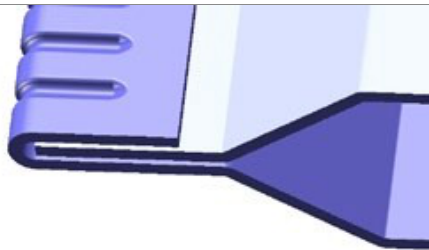


### Main features

- 1.Sensible heat recovery
- 2.Total separation of fresh & exhaust air streams
- 3.Heat recovery efficiency up to 90%
- 4.2-side press shaping
- 5.Single folded edge
- 6.Completely joint sealing.



2-side pressed shaping



Single folded edge

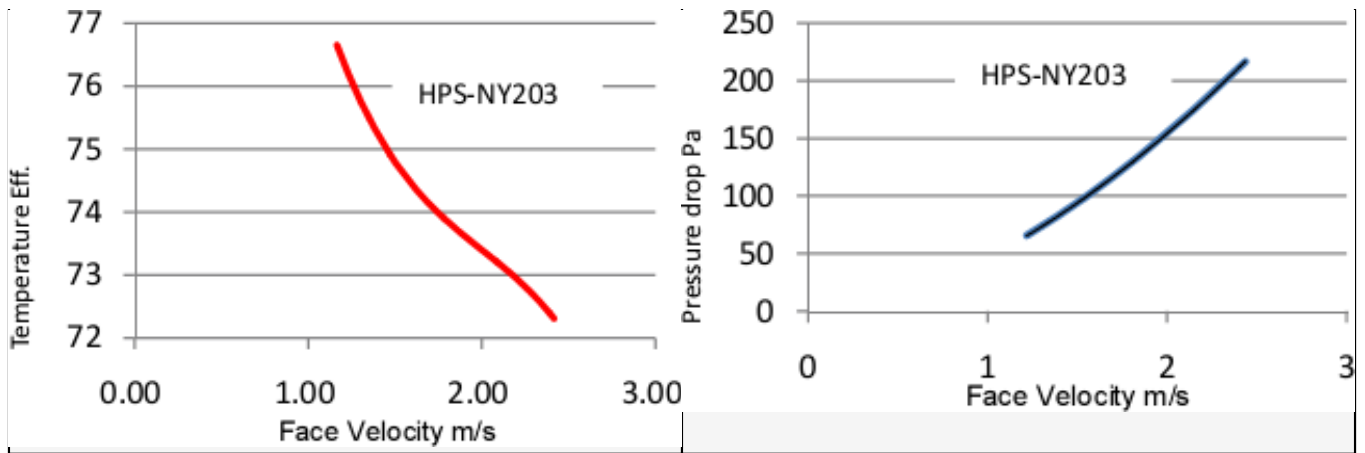
@3 times plate thickness



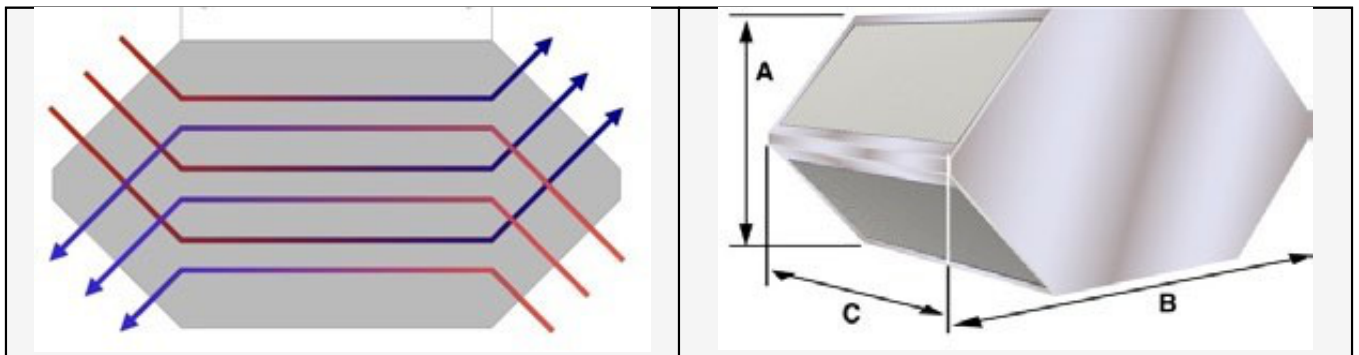
Completely joint sealing

### Performance chart

|  |  |
|--|--|
|  |  |
|--|--|



All data figured out above air tested according to GBT 21087-200



### Specifications

| Model         | A(mm) | B(mm) | Length per piece (C)   | Optional spacing (mm) |
|---------------|-------|-------|------------------------|-----------------------|
| HBS-LB539/316 | 316   | 539   | Custom-made Max. 650mm | 2.1                   |

Product link : <https://www.holtop.net/product/12.html>